

# GOMAN LIFT *Spider X12*

GX39

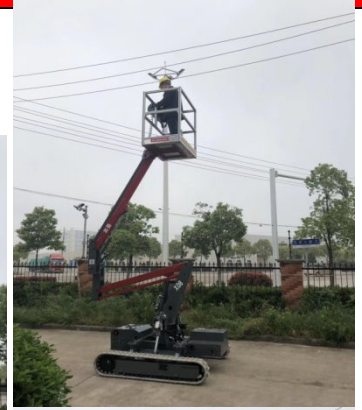


X12

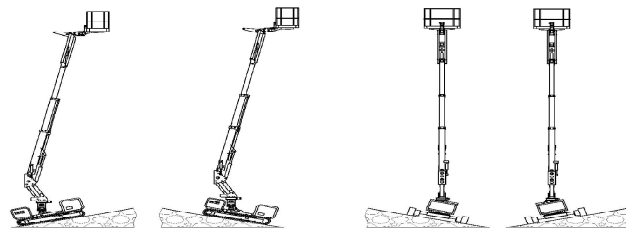
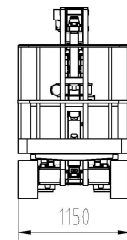
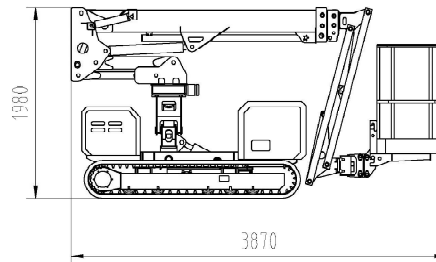
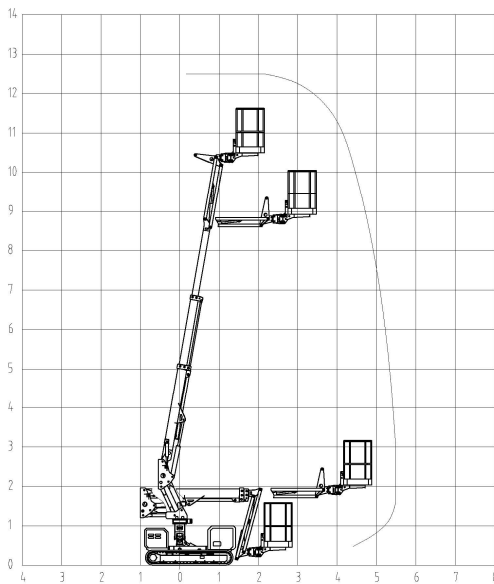
## Spider X12 (GX39)

### Standard Parameters

Model	X12	GX39
Max. work height	12.00m	39'
Max. platform height	10.00m	33'
Load capacity	230kg	507lb
Max. working radius	5.50m	18'
Size of platform	1.4*0.7*1.1m 55" x 28" x 43"	
Overall stowed length	3.87m	152"
Overall stowed width	1.15m	45"
Overall stowed height	1.98m	78"
Total weight	2890kg	6371lb
Driving speed	km/h	0-4.0
Max. work slope	20%	
Max. climbing ability	30%	
Standard Power	Lithium Battery 24V + Gasoline Engine	



### Technical data



### Standard Features

- ▶ Low ground pressure due to light weight, easy to turn around.
- ▶ HMI LCD display, double CPU for redundant control.
- ▶ Full proportional control
- ▶ Self-leveling platform
- ▶ Emergency descend system
- ▶ 360° continuous turntable rotation
- ▶ High driving speed
- ▶ Made of high tensile steel
- ▶ double axles adjustable
- ▶ With ISO9001 and CE-approval ISO CE